

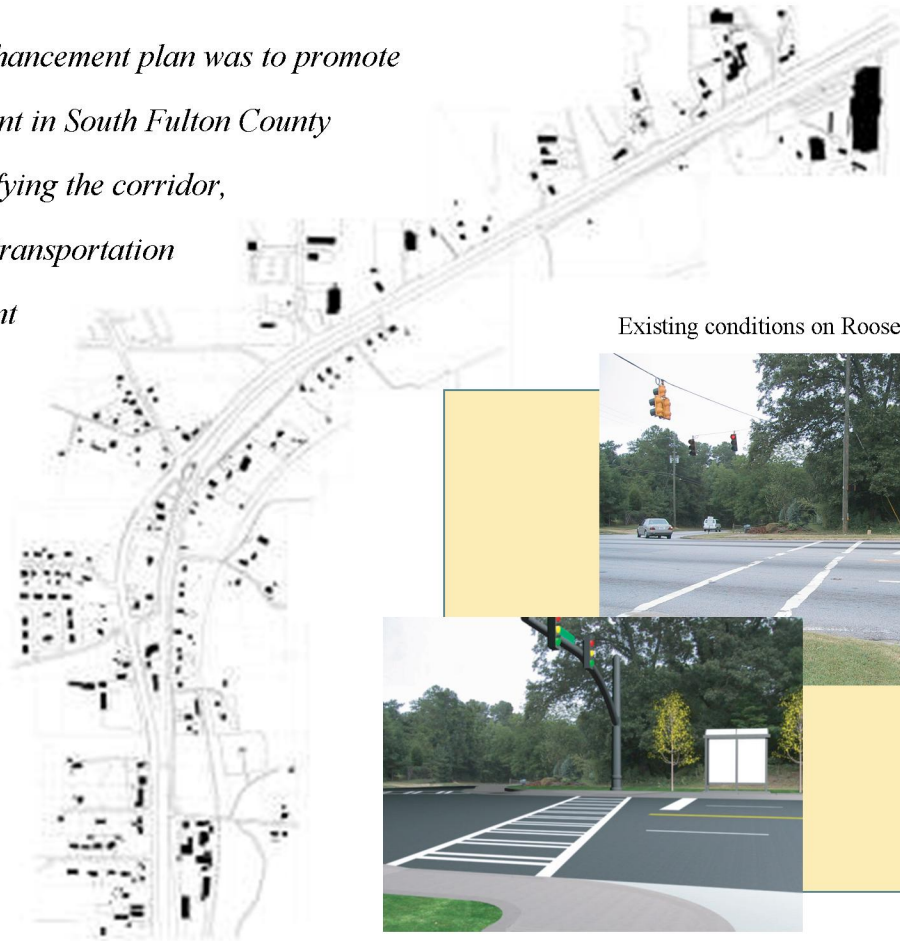
Roosevelt Highway (US29) CORRIDOR ENHANCEMENT PLAN

SOUTH FULTON REVITALIZATION, INC.

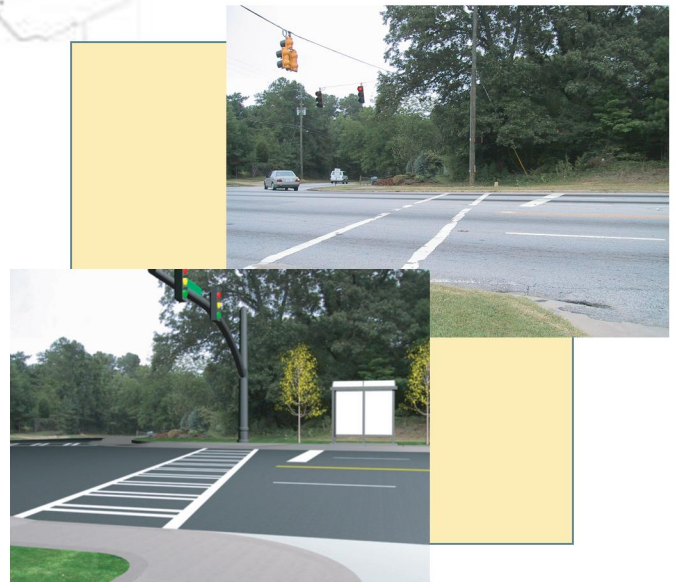
TARLEE BROWN, CHAIR

770-761-6003

The purpose of the corridor enhancement plan was to promote increased economic development in South Fulton County by beautifying and visually unifying the corridor, and by making the transit and transportation facilities safer, more convenient and more appealing.



Existing conditions on Roosevelt Highway



Preliminary site designs, landscaping, and hardscaping

Corridor Enhancements



Project management by BCA included preparation of the concept plan, holding community participation workshops, coordination of federal and state agencies to assist in environmental data analysis, and the preparation of design guidelines and overlay zoning.

The design guidelines established an identifiable character for the corridor by unifying issues of multi-modal access, safety and circulation patterns, and unifying the street image. The corridor image will be more specifically augmented through recommended site and architectural controls.

